

Product

725 Series

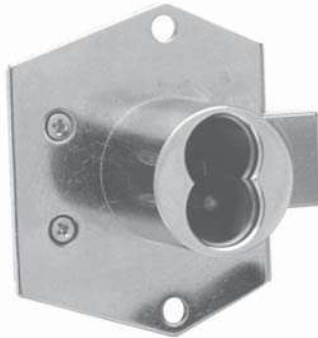
*Door & Drawer Locks for
Small Format IC Cores*



*725MD-DR-RH
Mortise, Deadbolt,
Right-hand*



*725ML-DW-IH
Mortise, Latchbolt,
Inverted-hand*



*725RD-DR-LH
Rim, Deadbolt,
Left-hand*



*725RL-DW-VH
Rim, Latchbolt,
Vertical-hand*

*725 Series lock
bodies accept
Best-style small
format inter-
changeable
cores (core not
included)*



Includes plastic
actuator to functionally
test lock without core

- *Surface or mortise mount*
- *Latch or deadbolt*
- *Door (Right-hand or Left-hand)*
- *Drawer (Vertical or Inverted)*
- *Includes matching strike plate*

Rainer Security Products Ltd.

Unit B6, Rudford Industrial Estate, Ford, Arundel West Sussex, BN18 0BF
Tel: +44 (0)1903 732211 Fax: +44 (0)1903 732777
email: sales@rainersecurity.co.uk



725 SERIES

Door & Drawer Locks for Small Format IC Cores

General Specifications

725 Series Door & Drawer Locks

Body: Zinc die cast cylinder housing, stamped steel back plate and steel case

Barrel diameter: 1-1/8"

Max. material thickness: 1-1/16"

Compatibility: Retrofits Best 5L Series

Finish: US26 (polished chrome), US26D (satin chrome), US3 (bright brass), US4 (satin brass)

Cylinder: not included, accepts standard small format IC cores as manufactured by Best, Arrow, Falcon, Schlage or other compatible small format IC core manufacturers

Keying: n/a

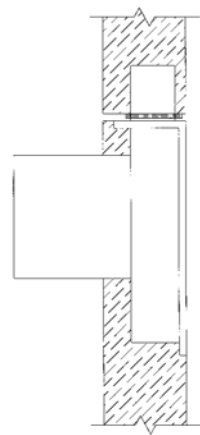
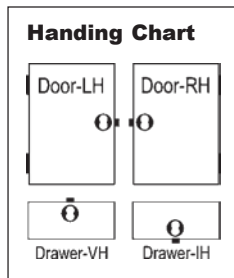
Accessories

Includes:

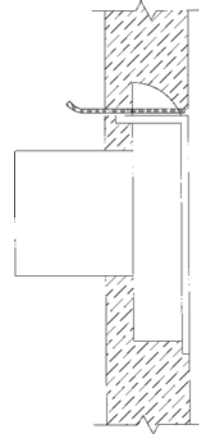
- 725-PA plastic actuator
- 725-1 spacer for 6 pin cores
- 725-SP series matching strike plate

Additional Functions

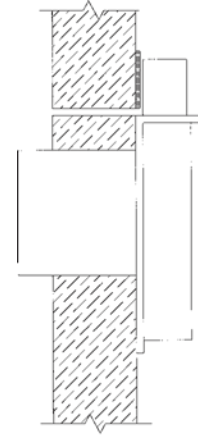
- 725ML/725RL - reverse latch available for DW-VH functions - use reverse latch for in-swinging door applications
- 725MD/725RD - key retaining function available for DW-VH or DW-IH applications



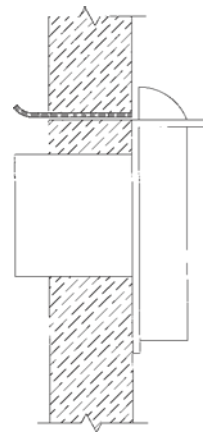
Mortise Deadbolt
725MD



Mortise Latch
725ML

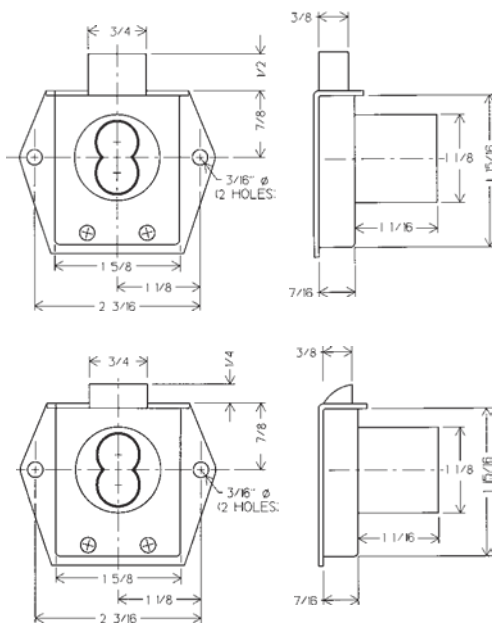


Rim Deadbolt
725RD



Rim Latch
725RL

725RD/725RL Series Dimensions



725MD/725ML Series Dimensions

